



**Right where  
you belong**

---

**at Danum Glade**

**gleeson**

Homes designed to complement modern day living

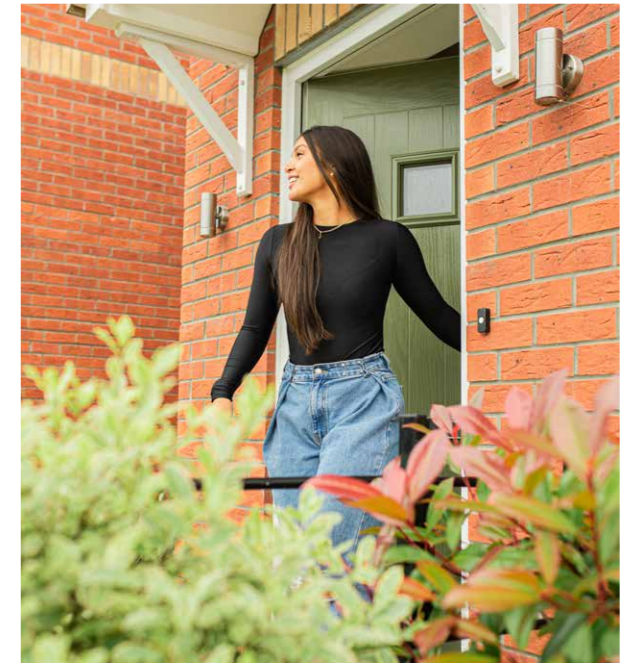


With over 120 years' experience in placemaking, we're perfectly suited to help you navigate your home buying journey

Gleeson builds developments across the North of England, Midlands and into Lincolnshire, meaning we have plenty of choice to help you find your dream home.

Buying a home is a significant life event and whether you're looking to get onto the property ladder for the first time or searching for a home that better suits your needs, we want to help you.

Plus, with an affordable collection of energy efficient, high-quality homes available, we're proud to be making homeownership achievable for everyone.

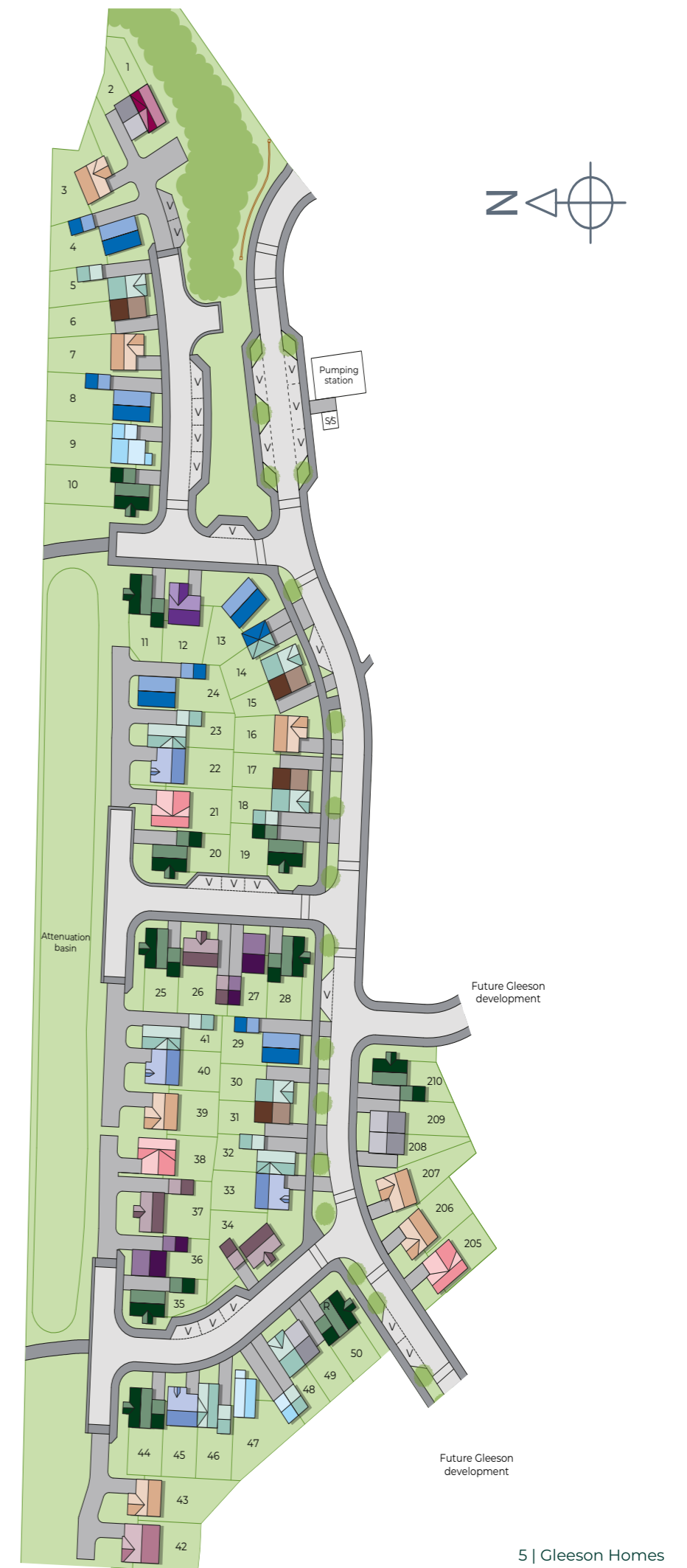


# Where modern living meets everyday convenience

Danum Glade is a stunning development consisting of 2, 3 and 4 bedroom semi-detached and detached homes in New Edlington, Doncaster. Perfect for first-time buyers, families and downsizers, the development is ideally located, benefitting from excellent transport links. Explore our site plan to discover the range of house styles available.

		
Dinan (Bungalow) 2 bedroom	Greystones 2 bedroom	Kenmare 2 bedroom
		
Glin 3 bedroom	Limerick 3 bedroom	Strade 3 bedroom
		
Neale 3 bedroom	Clifden 3 bedroom	Milford 3 bedroom
		
Dunmore 3 bedroom	Altan 3 bedroom	Grange 4 bedroom
		
Blessington 4 bedroom	Dalkey 4 bedroom	

This site layout is intended for illustrative purposes only and may be subject to change, for example in response to technical or planning requirements, ground conditions or market demand. It is not drawn to scale and does not show legal boundaries, easements, wayleaves, land contours or gradients, local authority street lighting or landscaping proposals. For specific property details, plot layouts or elevations, please speak to one of our Sales Executives.



# Living in New Edlington

New Edlington is a vibrant and welcoming village in South Yorkshire, offering a mix of green spaces, excellent transport links and everyday amenities. Nearby outdoor spaces include Edlington Community Woodland, Cusworth Hall and Park, and also a short driveaway is Yorkshire Wildlife Park, a fantastic attraction for the whole family to enjoy. From independent retailers to supermarkets, cafes, restaurants and a fantastic choice of schools, everything you need is close by. High-street shops and additional amenities are available in Doncaster city centre, just a short drive away.



The perfect balance of rural charm, urban access, and community warmth.

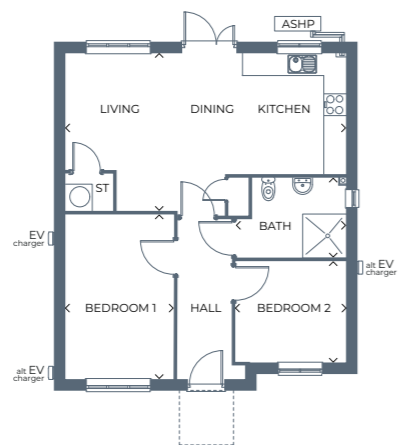




## Dinan

### 2 bedroom, detached bungalow

A modern, 2 bedroom bungalow with an open-plan kitchen, dining and living area, creating a seamless space.



**Ground floor**

Room	Metres	Feet & Inches
Kitchen / Dining / Living	7.74 x 4.32	25'5" x 14'2"

Room	Metres	Feet & Inches
Bedroom 1	4.50 x 3.01	14'9" x 9'11"
Bedroom 2	3.06 x 2.75	10'0" x 9'0"
Bathroom	3.04 x 2.20	10'0" x 7'3"

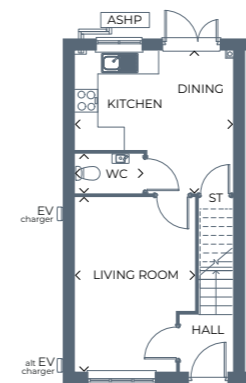
Gross internal area 722.7ft<sup>2</sup> / 67.14m<sup>2</sup>

Images, dimensions, and layouts are indicative only and not plot specific. Some images may also show optional upgrades at additional cost. Plot specific elevations and finishes may vary; these should be checked with your Sales Executive. Garages are provided to selected plots; your Sales Executive will be able to confirm whether your chosen plot includes a garage. EV charging points may or may not be fitted to your chosen home.

## Greystones

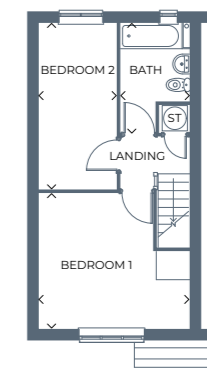
### 2 bedroom, semi-detached home

Benefitting from a bright living room, leading to a kitchen-diner, a handy cloakroom, two good-sized bedrooms and a family bathroom.



**Ground floor**

Room	Metres	Feet & Inches
Kitchen / Dining	4.14 x 3.74	13'7" x 12'3"
Living Room	4.59 x 3.16	15'1" x 10'4"
WC	1.80 x 1.05	5'11" x 3'5"



**First floor**

Room	Metres	Feet & Inches
Bedroom 1	3.76 x 4.14	12'4" x 13'7"
Bedroom 2	4.58 x 2.15	15'0" x 7'0"
Bathroom	3.02 x 1.90	9'11" x 6'3"

Gross internal area 750.7ft<sup>2</sup> / 69.74m<sup>2</sup>

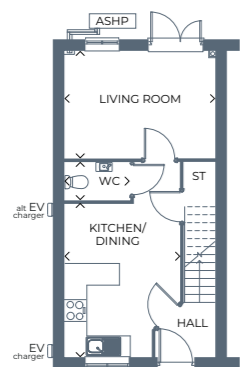
Images, dimensions, and layouts are indicative only and not plot specific. Some images may also show optional upgrades at additional cost. Plot specific elevations and finishes may vary; these should be checked with your Sales Executive. Garages are provided to selected plots; your Sales Executive will be able to confirm whether your chosen plot includes a garage. EV charging points may or may not be fitted to your chosen home; please speak to your Sales Executive to confirm.



## Kenmare

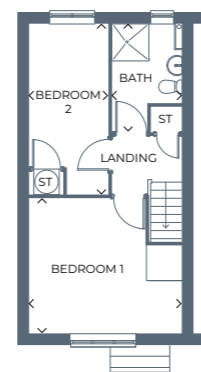
### 2 bedroom, semi-detached home

A stunning home with an open-plan kitchen-diner, separate living room, and two versatile bedrooms, plus a modern family bathroom.



**Ground floor**

Room	Metres	Feet & Inches
Kitchen / Dining	4.22 x 3.17	13'10" x 10'5"
Living Room	4.14 x 2.97	13'7" x 9'9"
WC	1.80 x 1.05	5'11" x 3'5"



**First floor**

Room	Metres	Feet & Inches
Bedroom 1	4.14 x 3.69	13'7" x 12'1"
Bedroom 2	4.64 x 2.15	15'3" x 7'1"
Bathroom	2.94 x 1.90	9'8" x 6'3"

Gross internal area 751.3ft<sup>2</sup> / 69.8m<sup>2</sup>

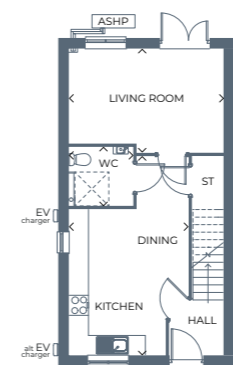
Images, dimensions, and layouts are indicative only and not plot specific. Some images may also show optional upgrades at additional cost. Plot specific elevations and finishes may vary; these should be checked with your Sales Executive. Garages are provided to selected plots; your Sales Executive will be able to confirm whether your chosen plot includes a garage. EV charging points may or may not be fitted to your chosen home.



## Glin

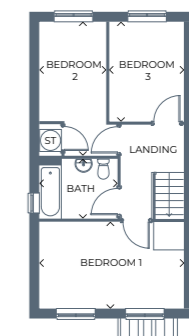
### 3 bedroom, semi-detached home

A stunning home with a spacious open-plan kitchen-diner, a large living area, three versatile bedrooms, and a family bathroom.



**Ground floor**

Room	Metres	Feet & Inches
Kitchen / Dining	5.94 x 3.56	19'5" x 11'8"
Living Room	4.59 x 3.11	15'1" x 10'4"
WC	1.91 x 1.77	6'3" x 5'10"



**First floor**

Room	Metres	Feet & Inches
Bedroom 1	4.59 x 2.75	15'1" x 9'0"
Bedroom 2	4.24 x 2.14	13'11" x 7'0"
Bedroom 3	3.20 x 2.35	10'6" x 7'8"
Bathroom	2.47 x 1.87	8'1" x 6'2"

Gross internal area 901.2ft<sup>2</sup> / 83.72m<sup>2</sup>

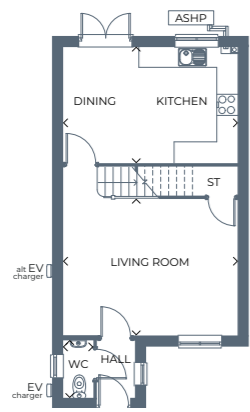
Images, dimensions, and layouts are indicative only and not plot specific. Some images may also show optional upgrades at additional cost. Plot specific elevations and finishes may vary; these should be checked with your Sales Executive. Garages are provided to selected plots; your Sales Executive will be able to confirm whether your chosen plot includes a garage. EV charging points may or may not be fitted to your chosen home; please speak to your Sales Executive to confirm. Ground floor shower provision or location may vary; please speak to your Sales Executive.



## Limerick

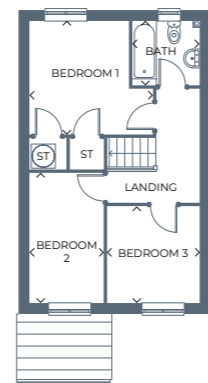
### 3 bedroom, detached home

A beautiful home with a bright, airy living room, spacious kitchen-diner, three versatile bedrooms and a family bathroom.



Ground floor

Room	Metres	Feet & Inches
Kitchen / Dining	4.92 x 3.28	16'2" x 10'9"
Living Room	4.92 x 3.86	16'2" x 12'8"
WC	0.85 x 1.59	2'10" x 5'3"



First floor

Room	Metres	Feet & Inches
Bedroom 1	3.58 x 3.29	11'9" x 10'10"
Bedroom 2	3.77 x 2.15	12'4" x 7'0"
Bedroom 3	2.67 x 2.80	8'9" x 9'2"
Bathroom	1.94 x 1.86	6'4" x 6'1"

Gross internal area 903ft<sup>2</sup> / 83.89m<sup>2</sup>

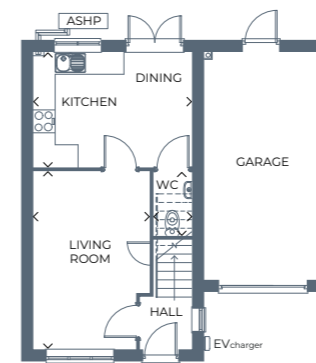
Images, dimensions, and layouts are indicative only and not plot specific. Some images may also show optional upgrades at additional cost. Plot specific elevations and finishes may vary; these should be checked with your Sales Executive. Garages are provided to selected plots; your Sales Executive will be able to confirm whether your chosen plot includes a garage. EV charging points may or may not be fitted to your chosen home.



## Strade

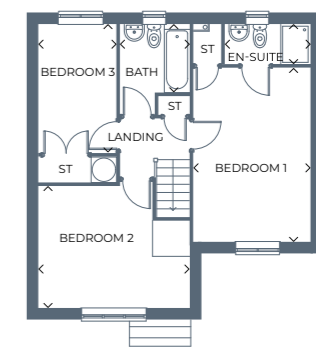
### 3 bedroom, detached home

This detached home features a spacious living room, modern kitchen-diner, with French doors out to the garden and three versatile bedrooms, the master with a luxurious en-suite.



Ground floor

Room	Metres	Feet & Inches
Kitchen / Dining	4.14 x 3.01	13'7" x 9'11"
Living Room	4.66 x 3.06	15'3" x 10'0"
WC	1.69 x 0.98	5'7" x 3'3"



First floor

Room	Metres	Feet & Inches
Bedroom 1	4.76 x 3.20	15'7" x 10'6"
En-suite	1.08 x 2.33	3'7" x 7'8"
Bedroom 2	3.24 x 4.15	10'8" x 13'7"
Bedroom 3	2.15 x 3.52	7'11" x 11'7"
Bathroom	1.86 x 1.89	6'1" x 6'2"

Gross internal area 1117.5ft<sup>2</sup> / 103.82m<sup>2</sup>

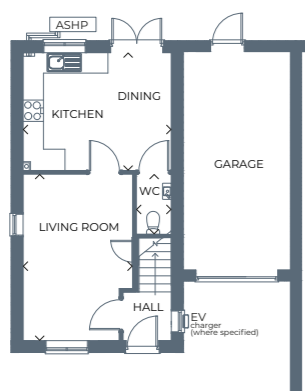
Images, dimensions, and layouts are indicative only and not plot specific. Some images may also show optional upgrades at additional cost. Plot specific elevations and finishes may vary; these should be checked with your Sales Executive. Garages are provided to selected plots; your Sales Executive will be able to confirm whether your chosen plot includes a garage. EV charging points may or may not be fitted to your chosen home; please speak to your Sales Executive to confirm. Gross internal area includes integral garage.



## Neale

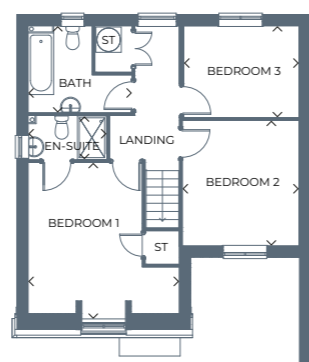
### 3 bedroom, semi-detached home

A stunning semi-detached home with an integral garage, featuring a spacious living room, modern kitchen-diner, three bedrooms, an en-suite and a family bathroom.



**Ground floor**

Room	Metres	Feet & Inches
Kitchen / Dining	4.14 x 3.29	13'7" x 10'10"
Living Room	4.65 x 3.06	15'3" x 10'1"
WC	1.69 x 0.98	5'7" x 3'3"



**First floor**

Room	Metres	Feet & Inches
Bedroom 1	4.14 x 4.16	13'7" x 13'8"
En-suite	2.15 x 1.20	7'0" x 3'11"
Bedroom 2	3.44 x 3.19	11'3" x 10'6"
Bedroom 3	3.14 x 2.51	10'4" x 8'3"
Bathroom	2.84 x 2.37	9'4" x 7'9"

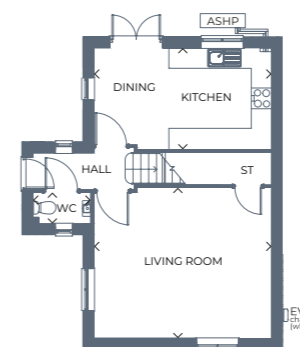
Gross internal area 1149.5ft<sup>2</sup> / 106.79m<sup>2</sup>

Images, dimensions, and layouts are indicative only and not plot specific. Some images may also show optional upgrades at additional cost. Plot specific elevations and finishes may vary; these should be checked with your Sales Executive. Garages are provided to selected plots; your Sales Executive will be able to confirm whether your chosen plot includes a garage. EV charging points may or may not be fitted to your chosen home. Gross internal area includes integral garage.

## Clifden

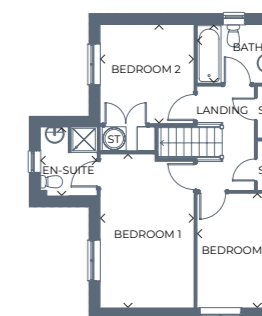
### 3 bedroom, detached home

A beautiful 3 bedroom detached home with a large kitchen-diner, spacious living room, family bathroom, and en-suite.



**Ground floor**

Room	Metres	Feet & Inches
Kitchen / Dining	5.07 x 2.90	16'8" x 9'6"
Living Room	5.07 x 4.30	16'8" x 14'1"
WC	1.66 x 0.88	5'5" x 2'10"



**First floor**

Room	Metres	Feet & Inches
Bedroom 1	4.52 x 2.75	14'10" x 9'0"
En-suite	2.00 x 1.65	6'7" x 5'5"
Bedroom 2	2.90 x 2.74	9'6" x 9'0"
Bedroom 3	3.36 x 2.23	11'0" x 7'4"
Bathroom	2.23 x 1.70	7'4" x 5'7"

Gross internal area 982.1ft<sup>2</sup> / 91.24m<sup>2</sup>

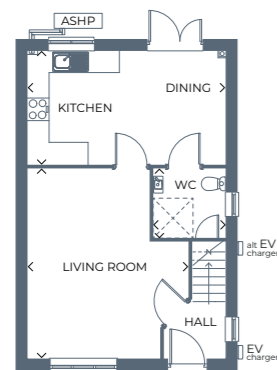
Images, dimensions, and layouts are indicative only and not plot specific. Some images may also show optional upgrades at additional cost. Plot specific elevations and finishes may vary; these should be checked with your Sales Executive. Garages are provided to selected plots; your Sales Executive will be able to confirm whether your chosen plot includes a garage. EV charging points may or may not be fitted to your chosen home; please speak to your Sales Executive to confirm.



## Milford

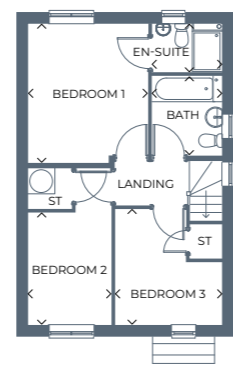
### 3 bedroom, detached home

A stunning detached home designed for modern living, with an open-plan kitchen-diner, living room, and three well-proportioned bedrooms.



**Ground floor**

Room	Metres	Feet & Inches
Kitchen / Dining	5.24 x 3.00	17'2" x 9'10"
Living Room	5.00 x 4.27	16'5" x 14'0"
Utility / WC	1.88 x 1.80	6'2" x 5'11"



**First floor**

Room	Metres	Feet & Inches
Bedroom 1	3.79 x 3.25	12'5" x 10'8"
En-suite	1.89 x 1.30	6'3" x 4'3"
Bedroom 2	2.20 x 3.03	7'2" x 9'11"
Bedroom 3	3.14 x 2.95	10'4" x 9'8"
Bathroom	1.90 x 2.21	6'3" x 7'3"

Gross internal area 916.4ft<sup>2</sup> / 85.14m<sup>2</sup>

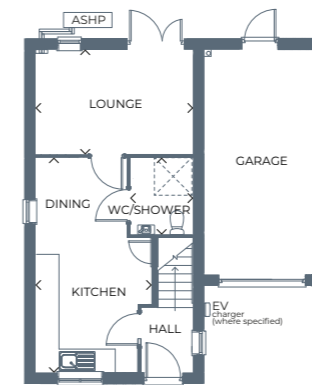
Images, dimensions, and layouts are indicative only and not plot specific. Some images may also show optional upgrades at additional cost. Plot specific elevations and finishes may vary; these should be checked with your Sales Executive. Garages are provided to selected plots; your Sales Executive will be able to confirm whether your chosen plot includes a garage. EV charging points may or may not be fitted to your chosen home. Ground floor shower provision or location may vary; please speak to your Sales Executive.



## Dunmore

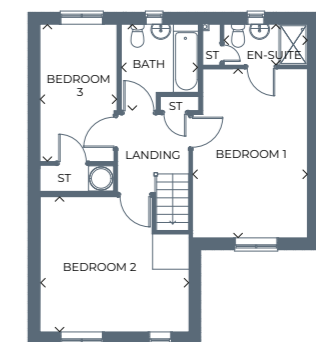
### 3 bedroom, detached home

A spacious detached home with an open-plan kitchen-diner, separate living room, three bedrooms (including a master en-suite), family bathroom, and integral garage.



**Ground floor**

Room	Metres	Feet & Inches
Kitchen / Dining	3.07 x 5.70	10'1" x 18'9"
Living Room	4.14 x 2.76	13'7" x 9'1"
WC	1.64 x 2.05	5'5" x 6'9"



**First floor**

Room	Metres	Feet & Inches
Bedroom 1	3.20 x 4.70	10'6" x 15'5"
En-suite	2.33 x 1.14	7'8" x 3'9"
Bedroom 2	4.15 x 3.76	13'7" x 12'4"
Bedroom 3	2.14 x 3.82	7'0" x 12'6"
Bathroom	2.15 x 2.41	7'1" x 7'11"

Gross internal area 1188.4ft<sup>2</sup> / 110.41m<sup>2</sup>

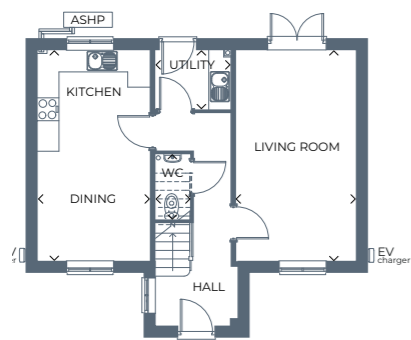
Images, dimensions, and layouts are indicative only and not plot specific. Some images may also show optional upgrades at additional cost. Plot specific elevations and finishes may vary; these should be checked with your Sales Executive. Garages are provided to selected plots; your Sales Executive will be able to confirm whether your chosen plot includes a garage. EV charging points may or may not be fitted to your chosen home; please speak to your Sales Executive to confirm. Ground floor shower provision or location may vary; please speak to your Sales Executive. Gross internal area includes integral garage.



## Grange

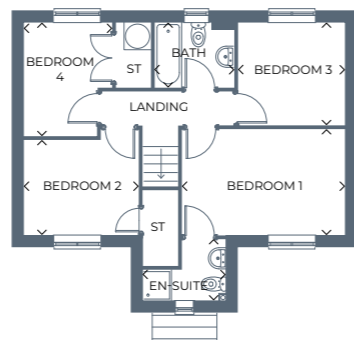
### 4 bedroom, detached home

A beautiful 4 bedroom detached home with a modern interior featuring an open-plan kitchen-diner, living room, and great-sized bedrooms.



**Ground floor**

Room	Metres	Feet & Inches
Kitchen / Dining	5.52 x 2.94	18'1" x 9'8"
Living Room	5.52 x 3.12	18'1" x 10'3"
Utility	1.97 x 1.55	6'5" x 5'1"
WC	1.70 x 0.90	5'7" x 3'0"



**First floor**

Room	Metres	Feet & Inches
Bedroom 1	4.25 x 2.75	13'11" x 9'0"
En-suite	2.14 x 1.59	7'0" x 5'3"
Bedroom 2	2.47 x 2.99	8'1" x 9'10"
Bedroom 3	2.80 x 2.67	9'2" x 8'9"
Bedroom 4	2.28 x 2.95	7'6" x 9'8"
Bathroom	2.05 x 1.70	6'9" x 5'7"

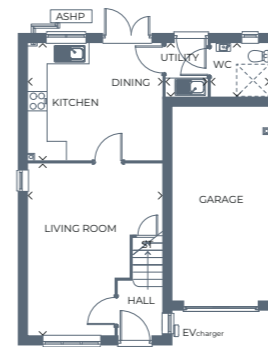
Gross internal area 1068.4ft<sup>2</sup> / 99.26m<sup>2</sup>

Images, dimensions, and layouts are indicative only and not plot specific. Some images may also show optional upgrades at additional cost. Plot specific elevations and finishes may vary; these should be checked with your Sales Executive. Garages are provided to selected plots; your Sales Executive will be able to confirm whether your chosen plot includes a garage. EV charging points may or may not be fitted to your chosen home; please speak to your Sales Executive to confirm.

## Blessington

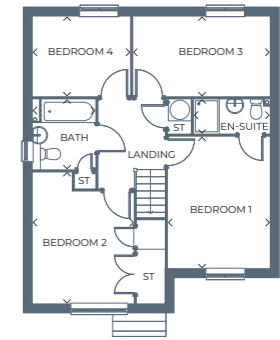
### 4 bedroom, detached home

An exceptional 4 bedroom detached home with a bright living area, open-plan kitchen-diner, plus utility room and versatile bedrooms.



**Ground floor**

Room	Metres	Feet & Inches
Kitchen / Dining	3.60 x 4.14	11'10" x 13'7"
Living Room	5.30 x 4.14	17'5" x 13'7"
Utility	1.29 x 1.64	4'3" x 5'5"
WC	1.83 x 1.64	6'0" x 5'5"



**First floor**

Room	Metres	Feet & Inches
Bedroom 1	3.20 x 4.15	10'6" x 13'8"
En-suite	2.38 x 1.08	7'10" x 3'6"
Bedroom 2	4.1 x 3.13	13'5" x 10'3"
Bedroom 3	4.29 x 2.51	14'1" x 8'3"
Bedroom 4	3.05 x 2.51	10'0" x 8'3"
Bathroom	2.16 x 1.94	7'1" x 6'4"

Gross internal area 1372.7ft<sup>2</sup> / 127.53m<sup>2</sup>

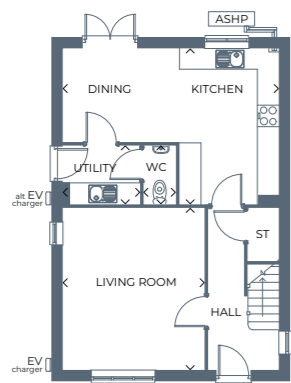
Images, dimensions, and layouts are indicative only and not plot specific. Some images may also show optional upgrades at additional cost. Plot specific elevations and finishes may vary; these should be checked with your Sales Executive. Garages are provided to selected plots; your Sales Executive will be able to confirm whether your chosen plot includes a garage. EV charging points may or may not be fitted to your chosen home. Ground floor shower provision or location may vary; please speak to your Sales Executive. Gross internal area includes integral garage.



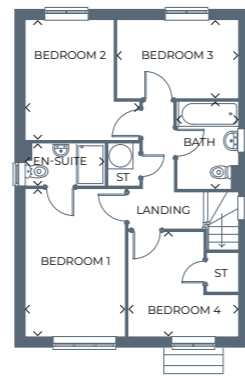
# Dalkey

## 4 bedroom, detached home

This home boasts a great sized living room, modern kitchen-diner, four bedrooms, master en-suite and family bathroom.



**Ground floor**



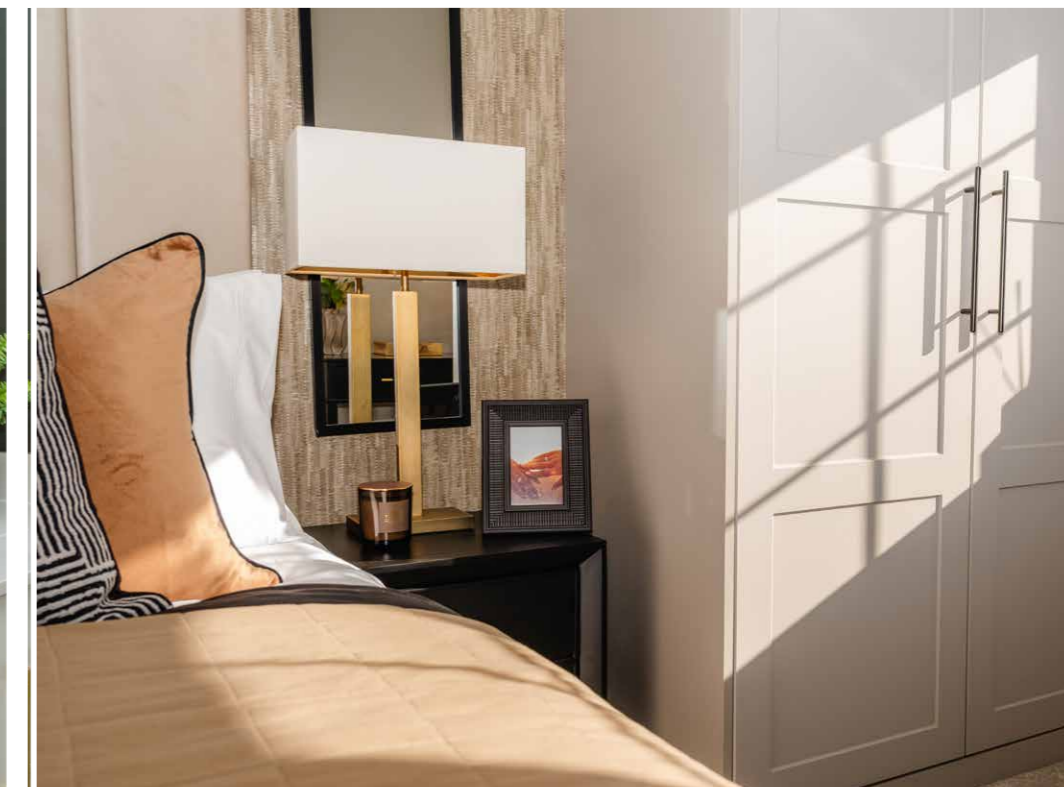
**First floor**

Room	Metres	Feet & Inches
Kitchen / Dining	6.00 x 4.31	19'8" x 14'2"
Living Room	4.48 x 3.94	14'8" x 12'11"
Utility	2.14 x 1.61	7'0" x 5'3"
WC	1.61 x 0.90	5'3" x 2'11"

Room	Metres	Feet & Inches
Bedroom 1	4.18 x 2.82	13'8" x 9'3"
En-suite	2.24 x 1.16	7'4" x 3'10"
Bedroom 2	3.22 x 3.37	10'7" x 11'1"
Bedroom 3	3.40 x 2.20	11'2" x 7'3"
Bedroom 4	3.09 x 2.95	10'1" x 9'8"
Bathroom	2.47 x 1.71	8'1" x 5'7"

Gross internal area 1155.2ft<sup>2</sup> / 107.32m<sup>2</sup>

Images, dimensions, and layouts are indicative only and not plot specific. Some images may also show optional upgrades at additional cost. Plot specific elevations and finishes may vary; these should be checked with your Sales Executive. Garages are provided to selected plots; your Sales Executive will be able to confirm whether your chosen plot includes a garage. EV charging points may or may not be fitted to your chosen home; please speak to your Sales Executive to confirm.



## Personalise your home

There are so many ways you can personalise your new home from the moment it starts being built thanks to our wide range of optional upgrades and extras.

Upgrades and extras are subject to build stage and availability

[Read more](#)

# Our standard specification

We work with well known brands to deliver a high level of specification, all at an affordable price.

- ✓ Standard features
- ★ Upgrades available, subject to build stage

## Kitchens

- Kitchen units, doors and handles from **Symphony Kitchens** ✓★
- Choice of worktops with matching upstands supplied from **Symphony Kitchens** ✓★
- Stainless steel splashback supplied from **Symphony Kitchens** ✓★
- Oven, hob and integrated cooker hood by **Beko** ✓★

## Bathroom

- Taps from **Methven** ✓
- Standard splashback tiling from **Porcelanosa** ✓★
- Standard height tiles to bathroom and en-suites from **Porcelanosa** ✓★
- White sanitaryware by **Twyford** ✓

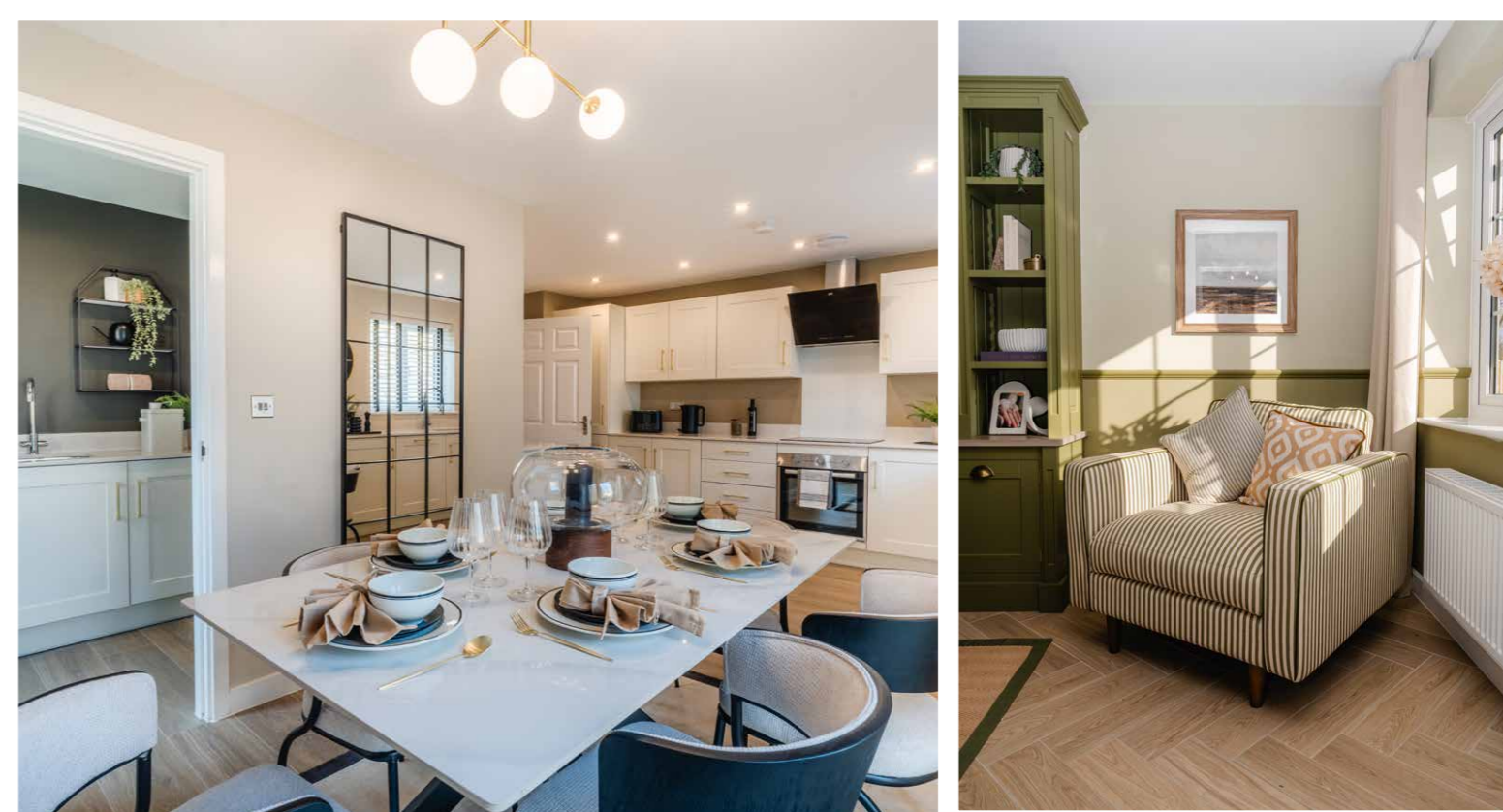
## Finishing touches

- Matt white paint finish to walls and ceilings by **Crown or Dulux** ✓

## Peace of mind

- Two year **Gleeson warranty** from legal completion date ✓
- A further eight years of cover via your **NHBC Buildmark Warranty** ✓

All of the specification listed is included in our houses as standard. Correct at time of production, October 2025, and subject to change without notice. Any options and extras are subject to build stage. Please contact a Gleeson Sales Executive for further information.



## Personalise your home

There are so many ways you can personalise your new home from the moment it starts being built thanks to our wide range of optional upgrades and extras.

Upgrades and extras are subject to build stage and availability

[Read more](#)

# Let's make it happen

When buying a home with Gleeson, there are lots of helpful schemes to make homeownership even easier to achieve. We're here to help every step of the way, from your initial enquiry right through to getting the keys to your beautiful new home.

[Read more on our website >](#)



Special terms and conditions apply. Please see <https://gleesonhomes.co.uk/special-terms> for more information. Schemes can be subject to plot and development. Please speak to your Gleeson Sales Executive for more information.

## First-time Buyer Assist

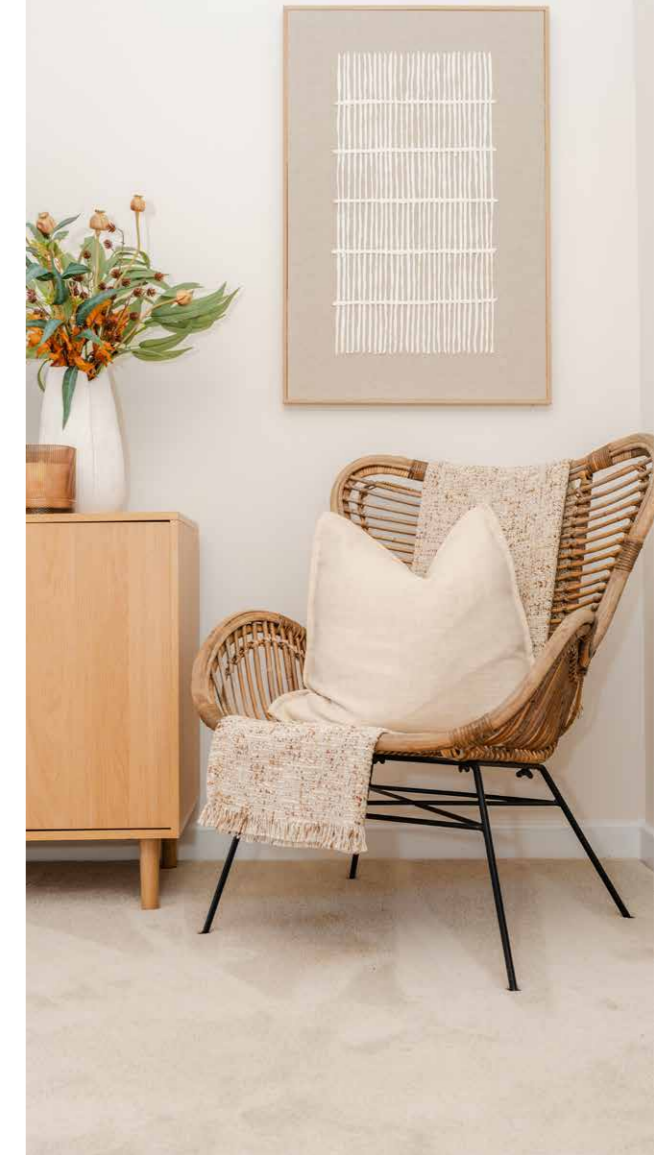
At Gleeson, we have many years of experience selling homes to first-time buyers and through our first-time buyer assist scheme, we're proud to offer some extra help to get you on the property ladder.

## Shared Ownership

With Shared Ownership, you buy a share of your Gleeson home and pay a monthly rent on the part you don't buy. Your budget will decide the size of the share you buy, making homeownership more affordable.

## Key Worker

If you're a key worker and considering taking your first steps onto the property ladder, or planning your next move, we will give you £1,500 towards additional extras to further personalise your new home.



## Part Exchange

Our Part Exchange scheme takes the hassle out of selling your existing home. Instead of waiting for a buyer, we become your guaranteed purchaser, saving you time and money.

## Own New Rate Reducer

Own New Rate Reducer can provide homebuyers with reduced monthly mortgage payments for an initial two or five-year period, making it more affordable for first-time buyers and existing homeowners to purchase their dream home.

# What happens next?

Whether you're embarking on a journey towards buying your very first home, or you're thinking about upsizing or rightsizing, Gleeson have the home for you.



## Make an appointment

We're ready when you are. Why not book an appointment to visit our sales centre and view our show homes? You can also use this as an opportunity to have any questions you may have answered by your Gleeson Sales Executive.

Contact us



## Let us help you

When buying a home with Gleeson, there are lots of helpful schemes to make moving even easier. Find out more about our buying schemes and make your dream become a reality with Gleeson.

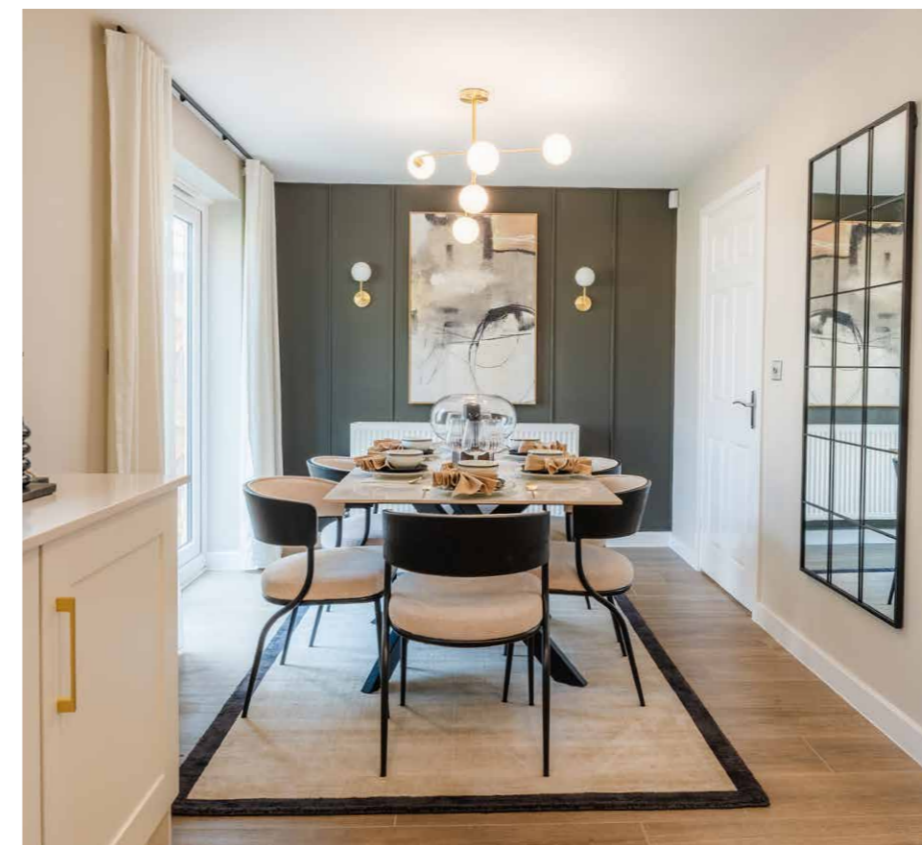
Find out more



All our homes are **carefully designed, beautifully built** and boast plenty of features and space to suit your lifestyle.

# Hear from our customers

If you're looking for inspiration or wondering whether buying a Gleeson home is right for you, read our customer's home buying stories to discover why they chose a Gleeson home and more about their experience.



Customer stories

From floorplans, to dimensions and even virtual tours, visit our website to discover more information about your dream home.

Images, dimensions, and layouts are indicative only and are not plot-specific. Some images may also show optional upgrades at additional cost. Plot-specific elevations and finishes may vary; these should be checked with your Sales Executive. Garages are provided to selected plots; your Sales Executive will be able to confirm whether your chosen plot includes a garage. EV charging points may or may not be fitted to your chosen home, and ground floor shower provision and location may differ; please confirm with your Sales Executive.

# How to find us

**Visit us** Danum Glade, Broomhouse Lane, Doncaster, DN4 9BW

**Contact us** 01302 245 532

[gleesonhomes.co.uk/developments/danum-glade](https://gleesonhomes.co.uk/developments/danum-glade)

## How to find us

From Doncaster City Centre, head southwest on the A630 towards Warmsworth and Edlington. The site is easily accessible from the A1(M) and the A630.





All information correct at time of production, 14 May 2026. All images in this brochure are for illustrative purposes only and may depict upgrades available at an additional cost, subject to build stage and availability. Dimensions and layouts within this brochure are indicative only and not plot specific. Elevations and finishes may vary by plot; please check with your Sales Executive for more information.

DB-023-V6