



**Right where
you belong**

at **Pinfold Park II**

gleeson

Homes designed to complement modern day living



With over 120 years' experience in placemaking, we're perfectly suited to help you navigate your home buying journey

Gleeson builds developments across the North of England, Midlands and into Lincolnshire, meaning we have plenty of choice to help you find your dream home.

Buying a home is a significant life event and whether you're looking to get onto the property ladder for the first time or searching for a home that better suits your needs, we want to help you.

Plus, with an affordable collection of energy efficient, high-quality homes available, we're proud to be making homeownership achievable for everyone.



Live in a coastal town with stunning scenery

Discover Pinfold Park II, a stunning development of 2, 3, and 4 bedroom homes and 2 bedroom bungalows in Bridlington. The fantastic location of this development offers the perfect blend of coastal calm and countryside charm. Explore our site plan to find your dream home at Pinfold Park II.



Dinan (Bungalow) 2 bedroom	Cork 2 bedroom	Kerry 2 bedroom
Mayfield 2 bedroom	Greystones 2 bedroom	Tallow 2 bedroom
Cranford 3 bedroom	Tyrone 3 bedroom	Wicklow 3 bedroom
Kilkenny 3 bedroom	Wexford 3 bedroom	Renmore 3 bedroom
Brandon 3 bedroom	Calry 3 bedroom	Keady 3 bedroom
Glin 3 bedroom	Milford 3 bedroom	Longford 4 bedroom
Carlow 4 bedroom	Dublin 4 bedroom	Affordable Re (conditions apply)

First Homes
(conditions apply)

This site layout is intended for illustrative purposes only and may be subject to change, for example in response to technical or planning requirements, ground conditions or market demand. It is not drawn to scale and does not show legal boundaries, easements, wayleaves, land contours or gradients, local authority street lighting or landscaping proposals. For specific property details, plot layouts or elevations, please speak to one of our Sales Executives.

Living in Bridlington

Bridlington offers miles of golden beaches, scenic clifftop walks, and nature reserves like Bempton Cliffs and Danes Dyke providing endless outdoor adventures.

The town is rich in family-friendly attractions, from Bridlington Animal Park and Bondville Model Village to vibrant seasonal events. The Old Town boasts independent shops, cafés, and a strong sense of community.

A choice of schools, including several rated 'Good' or 'Outstanding' by Ofsted, makes it a smart choice for families. The town is well-connected by rail and road to Hull, York, and Scarborough, making it a place where you can enjoy the best of coastal living without losing touch with nearby cities.

The perfect blend of coastal charm and practical living

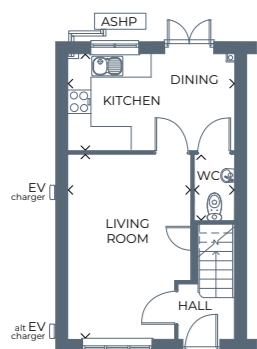




Cork

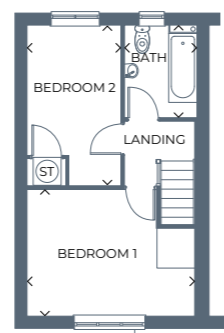
2 bedroom, semi-detached home

A beautiful semi-detached home boasting a spacious living area, kitchen-diner with French doors out to the garden and two generous sized bedrooms.



Ground floor

Room	Metres	Feet & Inches
Kitchen / Dining	2.41 x 4.14	7'11" x 13'7"
Living Room	4.64 x 3.06	15'3" x 10'
WC	1.68 x 0.99	5'6" x 3'3"



First floor

Room	Metres	Feet & Inches
Bedroom 1	4.14 x 3.10	13'7" x 10'2"
Bedroom 2	3.94 x 2.25	12'11" x 7'5"
Bathroom	2.25 x 1.79	7'5" x 5'10"

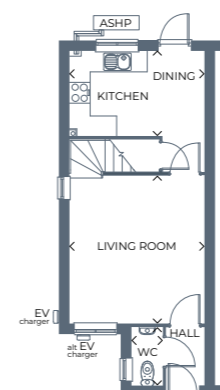
Gross internal area 635.9ft² / 59.08m²

Images, dimensions, and layouts are indicative only and not plot specific. Some images may also show optional upgrades at additional cost. Plot specific elevations and finishes may vary; these should be checked with your Sales Executive. Garages are provided to selected plots; your Sales Executive will be able to confirm whether your chosen plot includes a garage. EV charging points may or may not be fitted to your chosen home.

Kerry

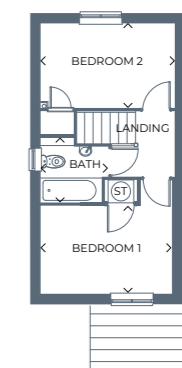
2 bedroom, semi-detached home

This semi-detached home combines a modern open-plan kitchen-diner with a cosy, separate living room, two spacious bedrooms and a family bathroom.



Ground floor

Room	Metres	Feet & Inches
Kitchen / Dining	3.76 x 2.38	12'5" x 7'10"
Living Room	4.17 x 3.76	13'8" x 12'5"
WC	1.59 x 0.87	5'3" x 2'10"



First floor

Room	Metres	Feet & Inches
Bedroom 1	3.76 x 2.47	12'5" x 8'1"
Bedroom 2	3.76 x 2.37	12'5" x 7'10"
Bathroom	1.84 x 1.89	6'1" x 6'2"

Gross internal area 654.7ft² / 60.82m²

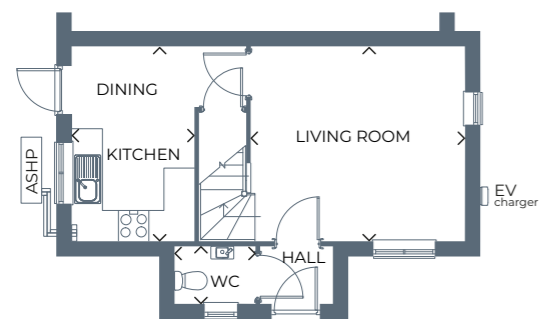
Images, dimensions, and layouts are indicative only and not plot specific. Some images may also show optional upgrades at additional cost. Plot specific elevations and finishes may vary; these should be checked with your Sales Executive. Garages are provided to selected plots; your Sales Executive will be able to confirm whether your chosen plot includes a garage. EV charging points may or may not be fitted to your chosen home; please speak to your Sales Executive to confirm.



Mayfield

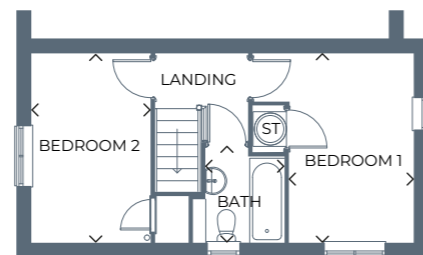
2 bedroom, semi-detached home

A bright, airy semi-detached home, with a spacious kitchen-diner, living room, two excellent bedrooms and a family bathroom.



Ground floor

Room	Metres	Feet & Inches
Kitchen / Dining	3.76 x 3.39	12'4" x 11'1"
Living Room	4.17 x 3.76	13'8" x 12'4"
WC	1.56 x 1.07	5'1" x 3'6"



First floor

Room	Metres	Feet & Inches
Bedroom 1	3.76 x 3.22	12'4" x 10'7"
Bedroom 2	3.76 x 2.38	12'4" x 7'10"
Bathroom	1.91 x 1.84	6'3" x 6'1"

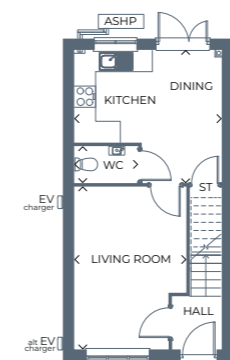
Gross internal area 657.1ft² / 61.05m²

Images, dimensions, and layouts are indicative only and not plot specific. Some images may also show optional upgrades at additional cost. Plot specific elevations and finishes may vary; these should be checked with your Sales Executive. Garages are provided to selected plots; your Sales Executive will be able to confirm whether your chosen plot includes a garage. EV charging points may or may not be fitted to your chosen home.

Greystones

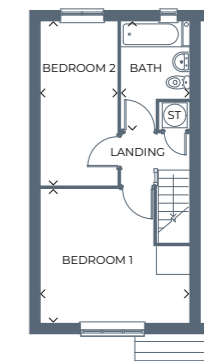
2 bedroom, semi-detached home

Benefitting from a bright living room, leading to a kitchen-diner, a handy cloakroom, two good-sized bedrooms and a family bathroom.



Ground floor

Room	Metres	Feet & Inches
Kitchen / Dining	4.14 x 3.74	13'7" x 12'3"
Living Room	4.59 x 3.16	15'1" x 10'4"
WC	1.80 x 1.05	5'11" x 3'5"



First floor

Room	Metres	Feet & Inches
Bedroom 1	3.76 x 4.14	12'4" x 13'7"
Bedroom 2	4.58 x 2.15	15'0" x 7'0"
Bathroom	3.02 x 1.90	9'11" x 6'3"

Gross internal area 750.7ft² / 69.74m²

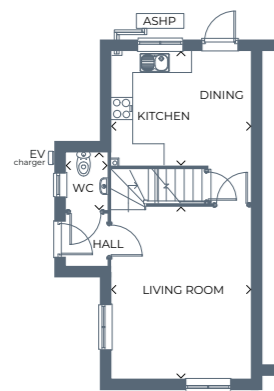
Images, dimensions, and layouts are indicative only and not plot specific. Some images may also show optional upgrades at additional cost. Plot specific elevations and finishes may vary; these should be checked with your Sales Executive. Garages are provided to selected plots; your Sales Executive will be able to confirm whether your chosen plot includes a garage. EV charging points may or may not be fitted to your chosen home; please speak to your Sales Executive to confirm.



Tallow

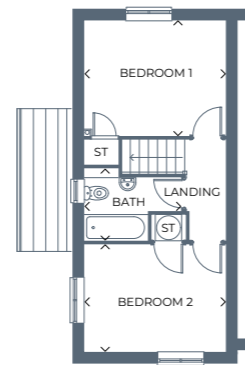
2 bedroom, semi-detached home

Boasting a modern kitchen-diner and a separate living room, creating a flexible living space. Upstairs, you'll find two great-sized bedrooms and a family bathroom.



Ground floor

Room	Metres	Feet & Inches
Kitchen / Dining	3.76 x 3.07	12'4" x 10'1"
Living Room	4.64 x 3.76	15'3" x 12'4"
WC	1.07 x 1.56	3'6" x 5'1"



First floor

Room	Metres	Feet & Inches
Bedroom 1	3.76 x 3.07	12'4" x 10'1"
Bedroom 2	3.76 x 2.85	12'4" x 9'4"
Bathroom	2.60 x 1.90	8'7" x 6'3"

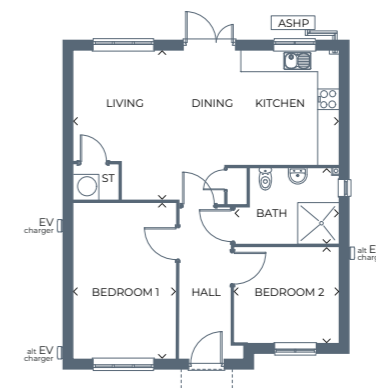
Gross internal area 752.7ft² / 69.93m²

Images, dimensions, and layouts are indicative only and not plot specific. Some images may also show optional upgrades at additional cost. Plot specific elevations and finishes may vary; these should be checked with your Sales Executive. Garages are provided to selected plots; your Sales Executive will be able to confirm whether your chosen plot includes a garage. EV charging points may or may not be fitted to your chosen home.

Dinan

2 bedroom, bungalow

A modern, 2 bedroom bungalow with an open-plan kitchen, dining and living area, creating a seamless space.



Ground floor

Room	Metres	Feet & Inches
Kitchen / Dining / Living	7.74 x 4.32	25'5" x 14'2"

Room	Metres	Feet & Inches
Bedroom 1	4.50 x 3.01	14'9" x 9'11"
Bedroom 2	3.06 x 2.75	10'0" x 9'0"
Bathroom	3.04 x 2.20	10'0" x 7'3"

Gross internal area 722.7ft² / 67.14m²

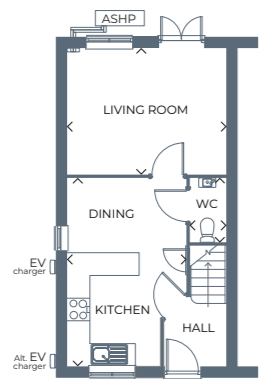
Images, dimensions, and layouts are indicative only and not plot specific. Some images may also show optional upgrades at additional cost. Plot specific elevations and finishes may vary; these should be checked with your Sales Executive. Garages are provided to selected plots; your Sales Executive will be able to confirm whether your chosen plot includes a garage. EV charging points may or may not be fitted to your chosen home; please speak to your Sales Executive to confirm.



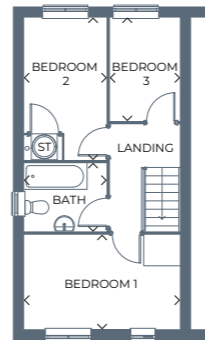
Tyrone

3 bedroom, semi-detached home

A beautiful 3 bedroom semi-detached home ideal for entertaining, featuring an open-plan kitchen-diner, spacious living room and great-sized bedrooms.



Ground floor



First floor

Room	Metres	Feet & Inches
Kitchen / Dining	4.95 x 3.13	16'3" x 10'3"
Living Room	4.15 x 3.31	13'7" x 10'10"
WC	1.70 x 0.94	5'7" x 3'1"

Room	Metres	Feet & Inches
Bedroom 1	4.15 x 2.52	13'7" x 8'3"
Bedroom 2	3.81 x 2.20	12'6" x 7'2"
Bedroom 3	2.76 x 1.86	9'1" x 6'1"
Bathroom	2.20 x 1.84	7'2" x 6'0"

Gross internal area 742.7ft² / 69m²

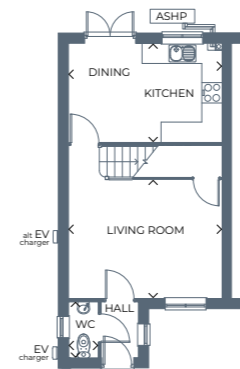
Images, dimensions, and layouts are indicative only and not plot specific. Some images may also show optional upgrades at additional cost. Plot specific elevations and finishes may vary; these should be checked with your Sales Executive. Garages are provided to selected plots; your Sales Executive will be able to confirm whether your chosen plot includes a garage. EV charging points may or may not be fitted to your chosen home.



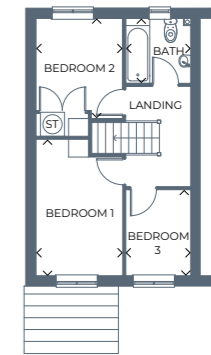
Wicklow

3 bedroom, semi-detached home

This semi-detached home boasts a bright, airy living room, a contemporary kitchen-diner and three great-sized bedrooms, plus a family bathroom.



Ground floor



First floor

Room	Metres	Feet & Inches
Kitchen / Dining	4.47 x 2.90	14'8" x 9'6"
Living Room	4.47 x 3.63	14'8" x 11'11"
WC	1.59 x 0.87	5'3" x 2'10"

Room	Metres	Feet & Inches
Bedroom 1	3.96 x 2.51	13'0" x 8'3"
Bedroom 2	2.91 x 2.51	9'7" x 8'3"
Bedroom 3	2.49 x 1.87	8'2" x 6'2"
Bathroom	1.87 x 1.87	6'2" x 6'2"

Gross internal area 754.8ft² / 70.12m²

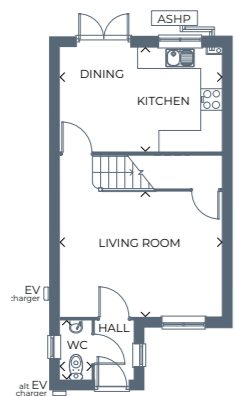
Images, dimensions, and layouts are indicative only and not plot specific. Some images may also show optional upgrades at additional cost. Plot specific elevations and finishes may vary; these should be checked with your Sales Executive. Garages are provided to selected plots; your Sales Executive will be able to confirm whether your chosen plot includes a garage. EV charging points may or may not be fitted to your chosen home; please speak to your Sales Executive to confirm.



Kilkeny

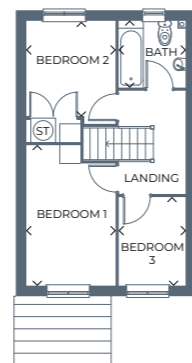
3 bedroom, detached home

A modern 3 bedroom detached home, with a spacious kitchen-diner, French doors to the garden, a large living room and versatile bedrooms.



Ground floor

Room	Metres	Feet & Inches
Kitchen / Dining	4.47 x 2.90	14'8" x 9'6"
Living Room	4.47 x 3.63	14'8" x 11'11"
WC	1.59 x 0.87	5'3" x 2'10"



First floor

Room	Metres	Feet & Inches
Bedroom 1	3.96 x 2.51	13'0" x 8'3"
Bedroom 2	2.91 x 2.51	9'6" x 8'3"
Bedroom 3	1.87 x 2.49	6'2" x 8'2"
Bathroom	1.87 x 1.87	6'2" x 6'2"

Gross internal area 754.8ft² / 70.12m²

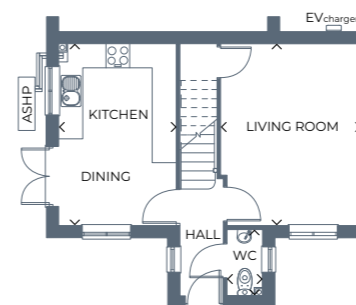
Images, dimensions, and layouts are indicative only and not plot specific. Some images may also show optional upgrades at additional cost. Plot specific elevations and finishes may vary; these should be checked with your Sales Executive. Garages are provided to selected plots; your Sales Executive will be able to confirm whether your chosen plot includes a garage. EV charging points may or may not be fitted to your chosen home.



Wexford

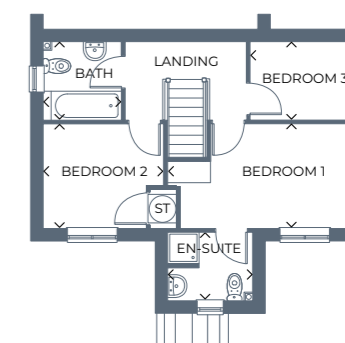
3 bedroom, semi-detached home

A modern semi-detached home with a combined kitchen-diner and French doors out to the garden, plus a separate living room and three bedrooms.



Ground floor

Room	Metres	Feet & Inches
Kitchen / Dining	4.47 x 2.92	14'8" x 9'7"
Living Room	4.47 x 3.44	14'8" x 11'4"
WC	1.66 x 0.88	5'5" x 2'11"



First floor

Room	Metres	Feet & Inches
Bedroom 1	4.46 x 2.51	14'8" x 8'3"
En-suite	2.00 x 1.66	6'7" x 5'5"
Bedroom 2	2.92 x 2.51	9'7" x 8'3"
Bedroom 3	2.49 x 1.87	8'2" x 6'2"
Bathroom	1.87 x 1.88	6'2" x 6'2"

Gross internal area 792.5ft² / 73.63m²

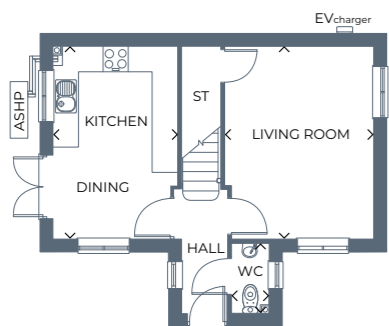
Images, dimensions, and layouts are indicative only and not plot specific. Some images may also show optional upgrades at additional cost. Plot specific elevations and finishes may vary; these should be checked with your Sales Executive. Garages are provided to selected plots; your Sales Executive will be able to confirm whether your chosen plot includes a garage. EV charging points may or may not be fitted to your chosen home; please speak to your Sales Executive to confirm.



Renmore

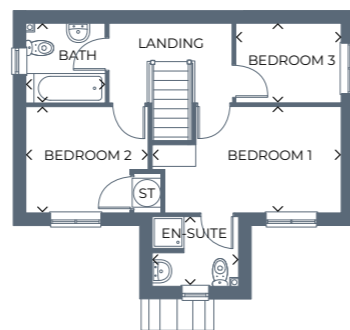
3 bedroom, detached home

A beautiful 3 bedroom detached home offering the perfect space for modern living, boasting a spacious kitchen-diner, family living room, bathroom and master en-suite.



Ground floor

Room	Metres	Feet & Inches
Kitchen / Dining	4.47 x 2.92	14'8" x 9'7"
Living Room	4.47 x 3.45	14'8" x 11'4"
WC	1.66 x 0.88	5'5" x 2'11"



First floor

Room	Metres	Feet & Inches
Bedroom 1	4.46 x 2.51	14'8" x 8'3"
En-suite	2.00 x 1.66	6'7" x 5'5"
Bedroom 2	2.92 x 2.51	9'7" x 8'3"
Bedroom 3	2.49 x 1.87	8'2" x 6'2"
Bathroom	1.87 x 1.88	6'2" x 6'2"

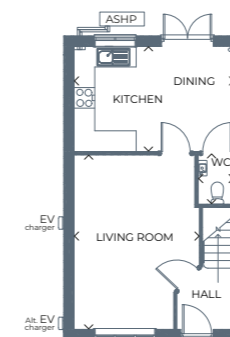
Gross internal area 792.9ft² / 73.66m²

Images, dimensions, and layouts are indicative only and not plot specific. Some images may also show optional upgrades at additional cost. Plot specific elevations and finishes may vary; these should be checked with your Sales Executive. Garages are provided to selected plots; your Sales Executive will be able to confirm whether your chosen plot includes a garage. EV charging points may or may not be fitted to your chosen home.

Brandon

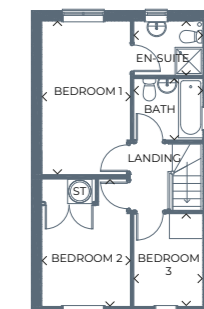
3 bedroom, detached home

A great 3 bedroom detached home perfectly designed for modern living, featuring a large living area, kitchen-diner, and great-sized bedrooms.



Ground floor

Room	Metres	Feet & Inches
Kitchen / Dining	4.57 x 3.00	15'0" x 9'10"
Living Room	5.00 x 3.61	16'5" x 11'10"
WC	1.40 x 1.00	4'7" x 3'3"



First floor

Room	Metres	Feet & Inches
Bedroom 1	4.40 x 2.52	14'5" x 8'3"
En-suite	1.96 x 1.53	6'5" x 5'0"
Bedroom 2	3.65 x 2.52	12'0" x 8'3"
Bedroom 3	2.64 x 1.96	8'8" x 6'5"
Bathroom	1.96 x 1.77	6'5" x 5'10"

Gross internal area 799.8ft² / 74.3m²

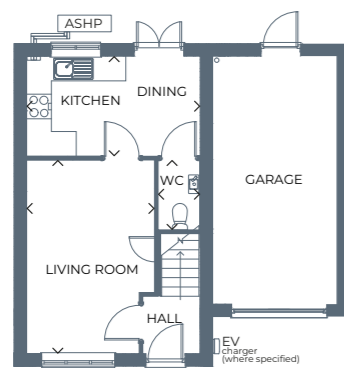
Images, dimensions, and layouts are indicative only and not plot specific. Some images may also show optional upgrades at additional cost. Plot specific elevations and finishes may vary; these should be checked with your Sales Executive. Garages are provided to selected plots; your Sales Executive will be able to confirm whether your chosen plot includes a garage. EV charging points may or may not be fitted to your chosen home; please speak to your Sales Executive to confirm.



Calry

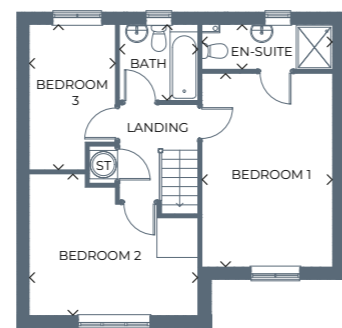
3 bedroom, detached home

A detached home with an integral garage boasting three bedrooms, with an en-suite to the master bedroom, a large kitchen-diner, spacious living room and a family bathroom.



Ground floor

Room	Metres	Feet & Inches
Kitchen / Dining	4.14 x 2.40	13'7" x 7'10"
Living Room	4.66 x 3.07	15'3" x 10'1"
WC	1.69 x 0.99	5'7" x 3'3"



First floor

Room	Metres	Feet & Inches
Bedroom 1	4.76 x 3.20	15'7" x 10'6"
En-suite	3.20 x 1.08	10'6" x 3'7"
Bedroom 2	4.14 x 3.48	13'7" x 11'5"
Bedroom 3	3.57 x 2.10	11'9" x 6'11"
Bathroom	1.85 x 1.94	6'1" x 6'4"

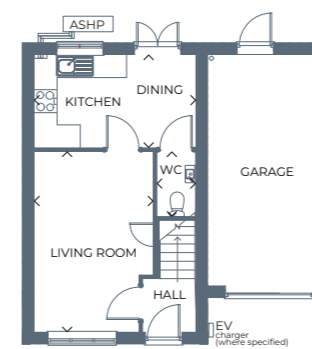
Gross internal area 1062.2ft² / 98.68m²

Images, dimensions, and layouts are indicative only and not plot specific. Some images may also show optional upgrades at additional cost. Plot specific elevations and finishes may vary; these should be checked with your Sales Executive. Garages are provided to selected plots; your Sales Executive will be able to confirm whether your chosen plot includes a garage. EV charging points may or may not be fitted to your chosen home. Gross internal area includes integral garage.

Keady

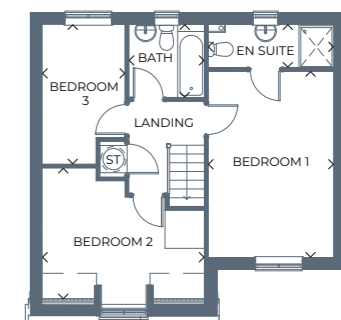
3 bedroom, semi-detached home

A stunning semi-detached home with a modern kitchen-diner, living room, three bedrooms, family bathroom and master en-suite.



Ground floor

Room	Metres	Feet & Inches
Kitchen / Dining	4.14 x 2.40	13'7" x 7'10"
Living Room	4.66 x 3.07	15'3" x 10'1"
WC	1.69 x 0.99	5'7" x 3'3"



First floor

Room	Metres	Feet & Inches
Bedroom 1	4.76 x 3.20	15'7" x 10'6"
En-suite	3.20 x 1.08	10'6" x 3'7"
Bedroom 2	4.14 x 3.36	13'7" x 11'0"
Bedroom 3	3.57 x 2.10	11'9" x 6'11"
Bathroom	1.94 x 1.85	6'4" x 6'1"

Gross internal area 1062.1ft² / 98.67m²

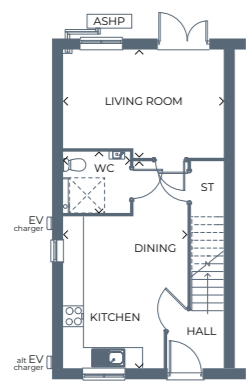
Images, dimensions, and layouts are indicative only and not plot specific. Some images may also show optional upgrades at additional cost. Plot specific elevations and finishes may vary; these should be checked with your Sales Executive. Garages are provided to selected plots; your Sales Executive will be able to confirm whether your chosen plot includes a garage. EV charging points may or may not be fitted to your chosen home; please speak to your Sales Executive to confirm. Gross internal area includes integral garage.



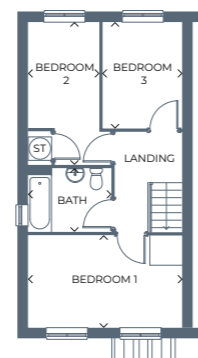
Glin

3 bedroom, semi-detached home

A stunning home with a spacious open-plan kitchen-diner, a large living area, three versatile bedrooms, and a family bathroom.



Ground floor



First floor

Room	Metres	Feet & Inches
Kitchen / Dining	5.94 x 3.56	19'5" x 11'8"
Living Room	4.59 x 3.11	15'1" x 10'4"
WC	1.91 x 1.77	6'3" x 5'10"

Room	Metres	Feet & Inches
Bedroom 1	4.59 x 2.75	15'1" x 9'0"
Bedroom 2	4.24 x 2.14	13'11" x 7'0"
Bedroom 3	3.20 x 2.35	10'6" x 7'8"
Bathroom	2.47 x 1.87	8'1" x 6'2"

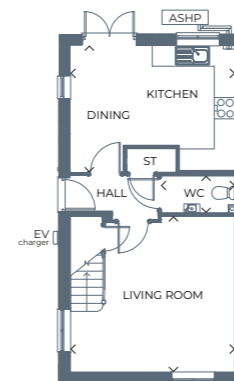
Gross internal area 901.2ft² / 83.72m²

Images, dimensions, and layouts are indicative only and not plot specific. Some images may also show optional upgrades at additional cost. Plot specific elevations and finishes may vary; these should be checked with your Sales Executive. Garages are provided to selected plots; your Sales Executive will be able to confirm whether your chosen plot includes a garage. EV charging points may or may not be fitted to your chosen home. Ground floor shower provision or location may vary; please speak to your Sales Executive

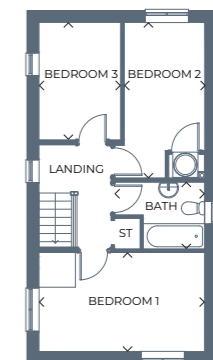
Cranford

3 bedroom, detached home

A beautiful detached home benefitting from an open-plan kitchen-diner with a spacious living room, three good-sized bedrooms and a family bathroom



Ground floor



First floor

Room	Metres	Feet & Inches
Kitchen / Dining	4.59 x 3.54	15'1" x 11'7"
Living Room	4.59 x 4.35	15'1" x 14'3"
WC	2.06 x 1.04	6'9" x 3'5"

Room	Metres	Feet & Inches
Bedroom 1	4.59 x 2.75	15'1" x 9'0"
Bedroom 2	4.30 x 2.23	14'1" x 7'4"
Bedroom 3	2.27 x 3.25	7'5" x 10'8"
Bathroom	2.50 x 1.84	8'2" x 6'0"

Gross internal area 901.6ft² / 83.76m²

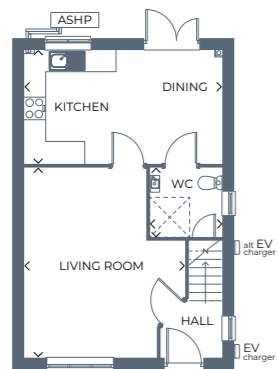
Images, dimensions, and layouts are indicative only and not plot specific. Some images may also show optional upgrades at additional cost. Plot specific elevations and finishes may vary; these should be checked with your Sales Executive. Garages are provided to selected plots; your Sales Executive will be able to confirm whether your chosen plot includes a garage. EV charging points may or may not be fitted to your chosen home; please speak to your Sales Executive to confirm.



Milford

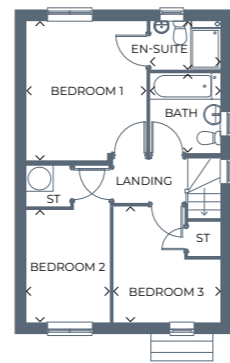
3 bedroom, detached home

A stunning detached home designed for modern living, with an open-plan kitchen-diner, living room, and three well-proportioned bedrooms.



Ground floor

Room	Metres	Feet & Inches
Kitchen / Dining	5.24 x 3.00	17'2" x 9'10"
Living Room	5.00 x 4.27	16'5" x 14'0"
Utility / WC	1.88 x 1.80	6'2" x 5'11"



First floor

Room	Metres	Feet & Inches
Bedroom 1	3.79 x 3.25	12'5" x 10'8"
En-suite	1.89 x 1.30	6'3" x 4'3"
Bedroom 2	2.20 x 3.03	7'2" x 9'11"
Bedroom 3	3.14 x 2.95	10'4" x 9'8"
Bathroom	1.90 x 2.21	6'3" x 7'3"

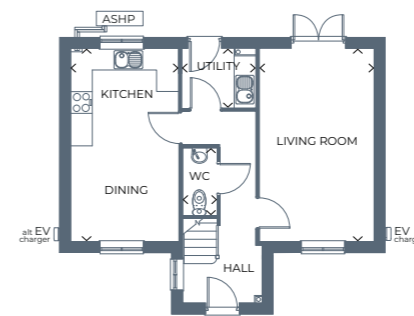
Gross internal area 916.4ft² / 85.14m²

Images, dimensions, and layouts are indicative only and not plot specific. Some images may also show optional upgrades at additional cost. Plot specific elevations and finishes may vary; these should be checked with your Sales Executive. Garages are provided to selected plots; your Sales Executive will be able to confirm whether your chosen plot includes a garage. EV charging points may or may not be fitted to your chosen home. Ground floor shower provision or location may vary; please speak to your Sales Executive

Carlow

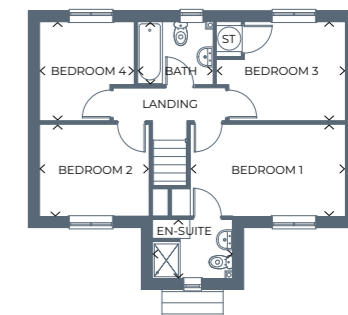
4 bedroom, detached home

A modern 4 bedroom detached home with a spacious kitchen and dining area plus utility room, French doors to the garden, living room, family bathroom and master en-suite.



Ground floor

Room	Metres	Feet & Inches
Kitchen / Dining	5.30 x 2.94	17'4" x 9'8"
Living Room	5.29 x 3.12	17'4" x 10'3"
Utility	1.96 x 1.56	6'5" x 5'1"
WC	1.72 x 0.90	5'8" x 3'0"



First floor

Room	Metres	Feet & Inches
Bedroom 1	4.23 x 2.50	13'11" x 8'3"
En-suite	2.14 x 1.61	7'0" x 5'4"
Bedroom 2	2.99 x 2.51	9'9" x 8'3"
Bedroom 3	2.69 x 3.52	8'10" x 11'6"
Bedroom 4	2.69 x 2.57	8'10" x 8'5"
Bathroom	2.08 x 1.70	6'10" x 5'7"

Gross internal area 1028ft² / 95.5m²

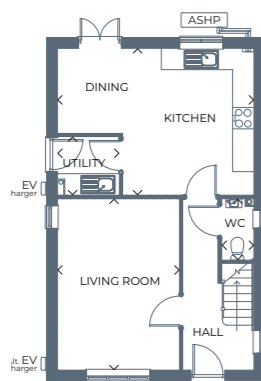
Images, dimensions, and layouts are indicative only and not plot specific. Some images may also show optional upgrades at additional cost. Plot specific elevations and finishes may vary; these should be checked with your Sales Executive. Garages are provided to selected plots; your Sales Executive will be able to confirm whether your chosen plot includes a garage. EV charging points may or may not be fitted to your chosen home; please speak to your Sales Executive to confirm.



Longford

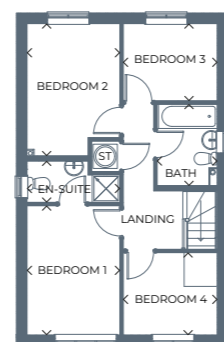
4 bedroom, detached home

A stunning 4 bedroom detached home with a large living area, kitchen-diner, great-sized bedrooms, en-suite and a family bathroom.



Ground floor

Room	Metres	Feet & Inches
Kitchen / Dining	5.44 x 4.06	17'10" x 13'4"
Living Room	4.74 x 3.39	15'7" x 11'1"
Utility	1.71 x 1.62	5'7" x 5'4"
WC	1.70 x 0.89	5'6" x 3'3"



First floor

Room	Metres	Feet & Inches
Bedroom 1	3.71 x 2.66	12'2" x 8'9"
En-suite	2.66 x 1.20	8'9" x 3'11"
Bedroom 2	3.80 x 2.66	12'6" x 8'9"
Bedroom 3	2.70 x 2.21	8'10" x 7'3"
Bedroom 4	2.70 x 2.36	8'10" x 7'9"
Bathroom	2.36 x 1.72	7'9" x 5'8"

Gross internal area 1046.9ft² / 97.26m²

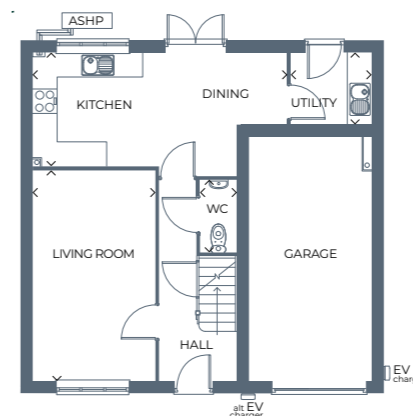
Images, dimensions, and layouts are indicative only and not plot specific. Some images may also show optional upgrades at additional cost. Plot specific elevations and finishes may vary; these should be checked with your Sales Executive. Garages are provided to selected plots; your Sales Executive will be able to confirm whether your chosen plot includes a garage. EV charging points may or may not be fitted to your chosen home.



Dublin

4 bedroom, detached home

A stunning detached home with an open-plan kitchen-diner, French doors out to the garden, four versatile bedrooms, a private master en-suite and a family bathroom.

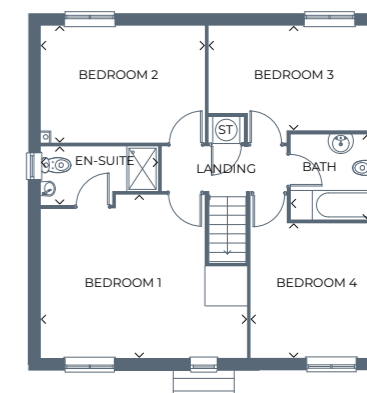


Ground floor

Room	Metres	Feet & Inches
Kitchen / Dining	6.23 x 2.74	20'5" x 9'0"
Living Room	5.12 x 2.99	16'9" x 9'10"
Utility	1.93 x 1.72	6'4" x 5'8"
WC	1.79 x 0.87	5'11" x 2'10"

Gross internal area 1426.5ft² / 132.53m²

Images, dimensions, and layouts are indicative only and not plot specific. Some images may also show optional upgrades at additional cost. Plot specific elevations and finishes may vary; these should be checked with your Sales Executive. Garages are provided to selected plots; your Sales Executive will be able to confirm whether your chosen plot includes a garage. EV charging points may or may not be fitted to your chosen home; please speak to your Sales Executive to confirm. Gross internal area includes integral garage.



First floor

Room	Metres	Feet & Inches
Bedroom 1	4.97 x 3.93	16'4" x 12'11"
En-suite	2.82 x 1.42	9'3" x 4'8"
Bedroom 2	3.89 x 2.81	12'9" x 9'3"
Bedroom 3	4.28 x 2.52	14'0" x 8'3"
Bedroom 4	3.25 x 3.20	10'8" x 10'6"
Bathroom	2.22 x 2.08	7'3" x 6'10"

Our standard specification

We work with well known brands to deliver a high level of specification, all at an affordable price.

✓ Standard features ⭐ Upgrades available, subject to build stage

Kitchens

- Kitchen units, doors and handles from **Symphony Kitchens** ✓ ⭐
- Choice of worktops with matching upstands supplied from **Symphony Kitchens** ✓ ⭐
- Stainless steel splashback supplied from **Symphony Kitchens** ✓ ⭐
- Oven, hob and integrated cooker hood by **Beko** ✓ ⭐

Bathroom

- Taps from **Methven** ✓
- Standard splashback tiling from **Porcelanosa** ✓ ⭐
- Standard height tiles to bathroom and en-suites from **Porcelanosa** ✓ ⭐
- White sanitaryware by **Twyford** ✓

Finishing touches

- Matt white paint finish to walls and ceilings by **Crown or Dulux** ✓

Peace of mind

- Two year **Gleeson warranty** from legal completion date ✓
- A further eight years of cover via your **NHBC Buildmark Warranty** ✓

All of the specification listed is included in our houses as standard. Correct at time of production, October 2025, and subject to change without notice. Any options and extras are subject to build stage. Please contact a Gleeson Sales Executive for further information.



Personalise your home

There are so many ways you can personalise your new home from the moment it starts being built thanks to our wide range of optional upgrades and extras.

Upgrades and extras are subject to build stage and availability

[Read more](#)

Let's make it happen

When buying a home with Gleeson, there are lots of helpful schemes to make homeownership even easier to achieve. We're here to help every step of the way, from your initial enquiry right through to getting the keys to your beautiful new home.

[Read more on our website >](#)



Special terms and conditions apply. Please see <https://gleesonhomes.co.uk/special-terms> for more information. Schemes can be subject to plot and development. Please speak to your Gleeson Sales Executive for more information.



First-time Buyer Assist

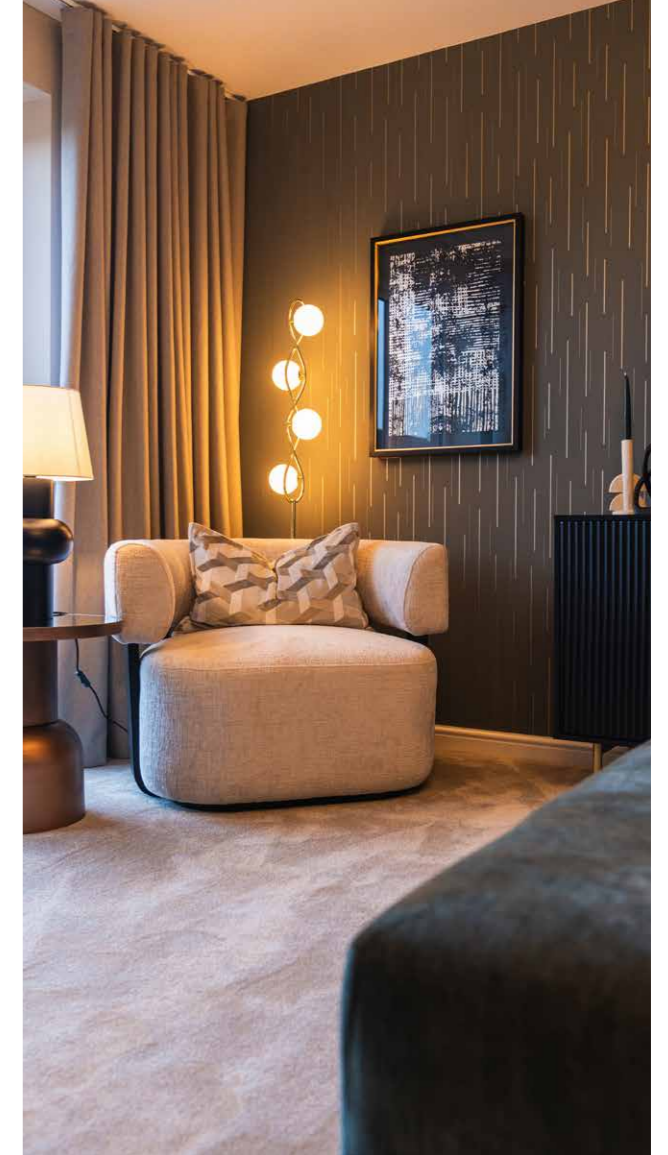
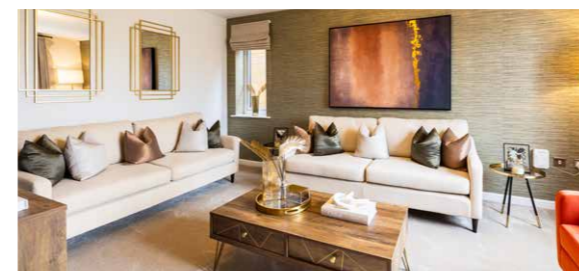
At Gleeson, we have many years of experience selling homes to first-time buyers and through our first-time buyer assist scheme, we're proud to offer some extra help to get you on the property ladder.

Shared Ownership

With Shared Ownership, you buy a share of your Gleeson home and pay a monthly rent on the part you don't buy. Your budget will decide the size of the share you buy, making homeownership more affordable.

Key Worker

If you're a key worker and considering taking your first steps onto the property ladder, or planning your next move, we will give you £1,500 towards additional extras to further personalise your new home.



Part Exchange

Our Part Exchange scheme takes the hassle out of selling your existing home. Instead of waiting for a buyer, we become your guaranteed purchaser, saving you time and money.

Own New Rate Reducer

Own New Rate Reducer can provide homebuyers with reduced monthly mortgage payments for an initial two or five-year period, making it more affordable for first-time buyers and existing homeowners to purchase their dream home.

What happens next?

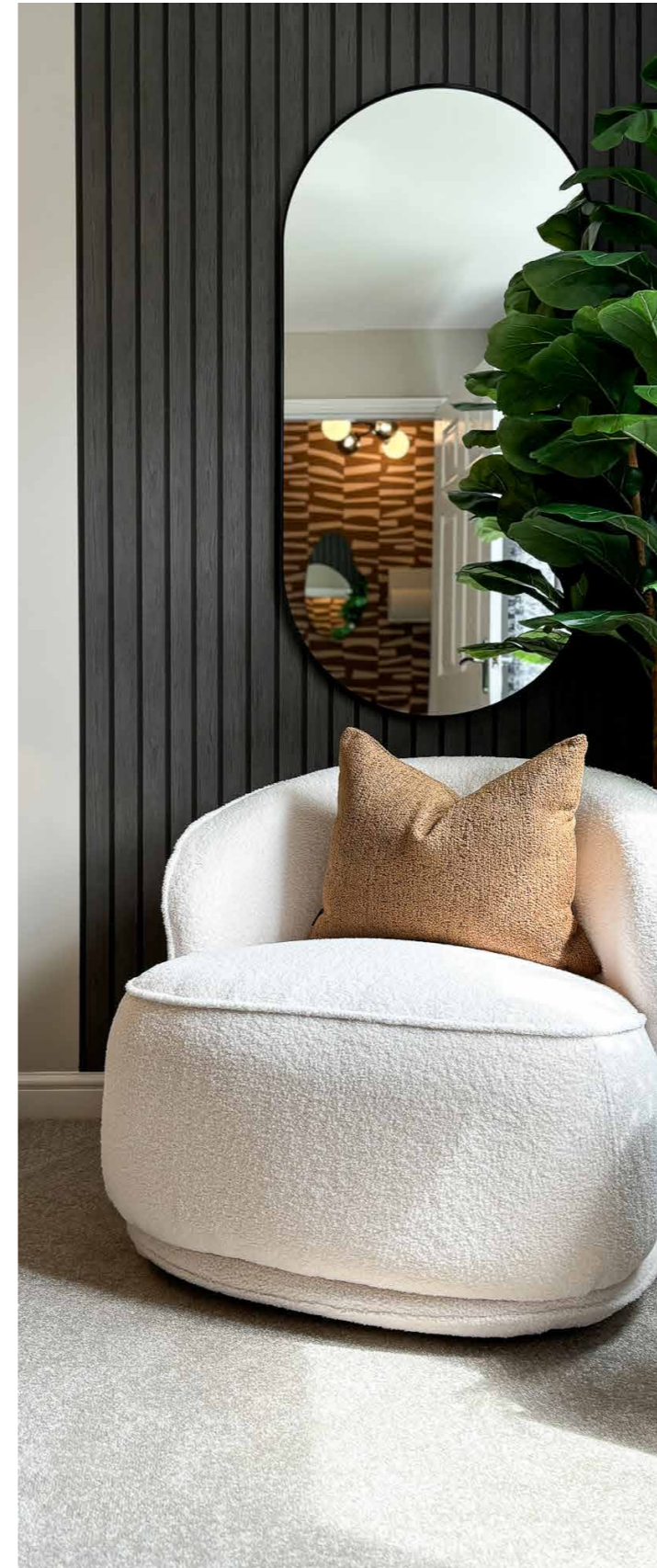
Whether you're embarking on a journey towards buying your very first home, or you're thinking about upsizing or rightsizing, Gleeson have the home for you.



Make an appointment

We're ready when you are. Why not book an appointment to visit our sales centre and view our show homes? You can also use this as an opportunity to have any questions you may have answered by your Gleeson Sales Executive.

Contact us



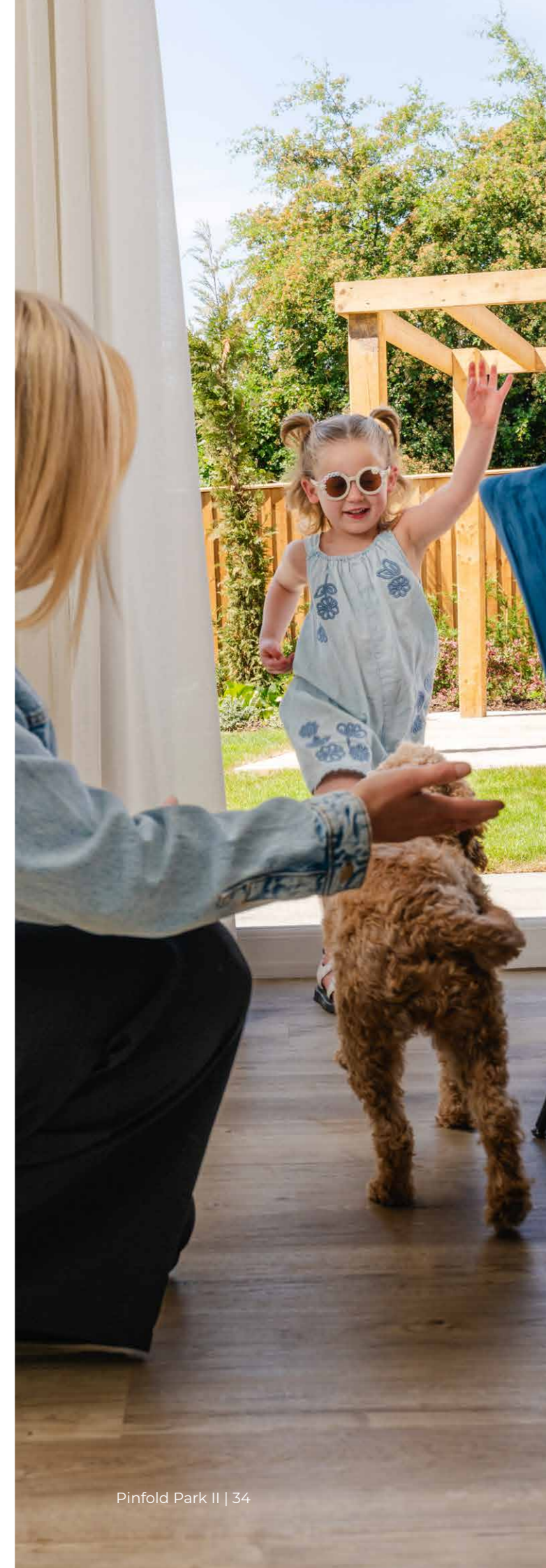
Let us help you

When buying a home with Gleeson, there are lots of helpful schemes to make moving even easier. Find out more about our buying schemes and make your dream become a reality with Gleeson.

Find out more



All our homes are **carefully designed, beautifully built** and boast plenty of features and space to suit your lifestyle.



Hear from our customers

If you're looking for inspiration or wondering whether buying a Gleeson home is right for you, read our customer's home buying stories to discover why they chose a Gleeson home and more about their experience.

[Customer stories](#)

How to find us

Visit us Pinfold Park II, Pinfold Lane, Bridlington, YO16 7AF

Contact us 01262 416 707

gleesonhomes.co.uk/developments/pinfold-park-ii

How to find us

Pinfold Park II in Bridlington (YO16 7AF) is located just north of the town centre, close to the A165, making it straightforward to reach by car from surrounding areas. If you're travelling from the south or west, the easiest route is via the A614, which connects directly towards Bridlington before joining the local road network.



All information correct at time of production, 7 May 2026. All images in this brochure are for illustrative purposes only and may depict upgrades available at an additional cost, subject to build stage and availability. Dimensions and layouts within this brochure are indicative only and not plot specific. Elevations and finishes may vary by plot; please check with your Sales Executive for more information.

DB-011-V5